



SMA Series

SMA Series

SMA (Sub-Miniature-A) series is a very popular coaxial connector, which is supplied with a threaded coupling interface. The impedance of the SMA is controlled at 50 ohms, and this series can be used up to frequencies of over 18GHz (depending on type). This connector is suitable for the standard ranges of flexible & semi-rigid cables, and it is also available as a flange or PCB mounted version.

Applications:

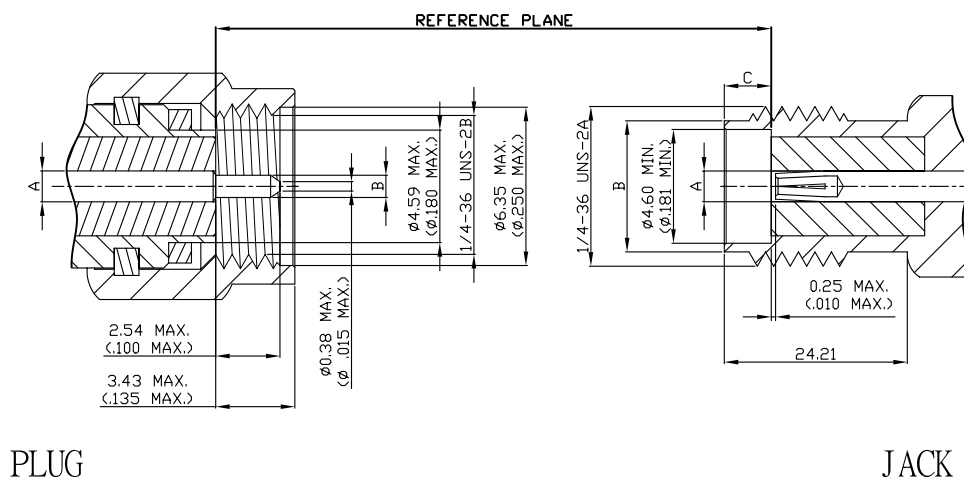
*telecommunications *testing equipment *PC/LAN *microwave components *wireless
*instrumentation

Interface dimensions conformable to the Standards:

International: IEC 169-15

USA: MIL-C-39012

SMA Interface Dimensions:



SMA Series					
PLUG			JACK		
	Minimum	Maximum		Minimum	Maximum
A	1.24(.049)	1.30(.051)		1.24(.049)	1.30(.051)
B	0.90(.035)	0.94(.037)		5.28(.208)	5.49(.216)
				1.88(.074)	1.98(.078)
					C

*Millimeters(Inches)



Materials :

Connector part	Material	Finish
Bodies	Brass Stainless Steel	Nickel or Gold Passivated or Gold
Center Contact	Male: Brass Female: Beryllium copper	Gold
Insulator	Teflon	N/A
Crimp ferrule	Annealed Copper	Nickel or Gold

Electrical :

Electrical Data	Detail																					
Impedance	50 ohm																					
Frequency range	Flexible cable: 0~12.4GHz Semi-rigid cable: 0~18GHz																					
Working voltage	RG402 (.141") → 500 volts rms max. RG405 (.085") → 335 volts rms max. RG58, 141, 142, 223/U → 500 volts rms max. RG174, 188, 316/U → 335 volts rms max. RG178, 196/U → 250 volts rms max.																					
Insulation resistance	5,000 megohms min.																					
Dielectric withstanding voltage	RG402 (.141") → 1,000 volts rms max. RG405 (.085") → 750 volts rms max. RG58, 141, 142, 223/U → 1,000 volts rms max. RG174, 188, 316/U → 750 volts rms max. RG178, 196/U → 500 volts rms max.																					
Contact resistance	Center contact: 3.0 Milliohms max. Outer contact: 2.0 Milliohms max.																					
VSWR: f (GHz)	<table border="1"> <thead> <tr> <th></th> <th>Straight</th> <th>Right angle</th> </tr> </thead> <tbody> <tr> <td>RG178/U</td> <td></td> <td></td> </tr> <tr> <td>RG174, 316/U</td> <td>1.20+0.025f</td> <td>1.20+0.03f</td> </tr> <tr> <td>RG58, 141, 142, 223/U</td> <td>1.15+0.02f</td> <td>1.15+0.03f</td> </tr> <tr> <td>RG402 (.141")</td> <td>1.10+0.01f</td> <td>1.15+0.02f</td> </tr> <tr> <td>RG405 (.085")</td> <td>1.05+0.005f</td> <td>1.15+0.15f</td> </tr> <tr> <td></td> <td>1.05+0.005f</td> <td>1.18+0.15f</td> </tr> </tbody> </table>		Straight	Right angle	RG178/U			RG174, 316/U	1.20+0.025f	1.20+0.03f	RG58, 141, 142, 223/U	1.15+0.02f	1.15+0.03f	RG402 (.141")	1.10+0.01f	1.15+0.02f	RG405 (.085")	1.05+0.005f	1.15+0.15f		1.05+0.005f	1.18+0.15f
	Straight	Right angle																				
RG178/U																						
RG174, 316/U	1.20+0.025f	1.20+0.03f																				
RG58, 141, 142, 223/U	1.15+0.02f	1.15+0.03f																				
RG402 (.141")	1.10+0.01f	1.15+0.02f																				
RG405 (.085")	1.05+0.005f	1.15+0.15f																				
	1.05+0.005f	1.18+0.15f																				
Insertion loss	0.04 dB maximum x f GHz (straight) 0.06 dB maximum x f GHz (right angle)																					

Mechanical :

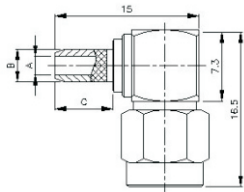
Mechanical Data	Detail
Engagement force	60 lbs min.
Disengagement force	15 inch-pound
Connector durability	500 cycles min.
Cable retention force	RG58, 141, 142, 223/U → 40 lbs min. RG174, 188, 316/U → 20 lbs min.

Environmental :

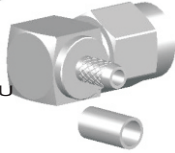
Environmental Data	Detail
Corrosion (Salt spray)	MIL-STD-202 METHOD 101 TEST CONDITION B
Thermal shock	MIL-STD-202 METHOD 107 TEST CONDITION B
Vibration	MIL-STD-202 METHOD 204 TEST CONDITION D
Mechanical shock	MIL-STD-202 METHOD 213 TEST CONDITION I
Temperature range	-65 to 165

SMA RIGHT ANGLE PLUG FOR CABLE TYPE

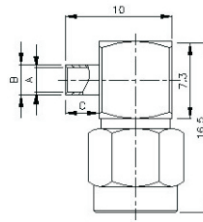
CRIMP FOR FLEXIBLE CABLE



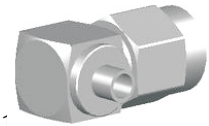
PART NUMBER:
 SMA-02S-TGN(-RP) LMR-400
 SMA-02B-TGN(-RP) RG-213/U
 SMA-02R-TGN(-RP) LMR-240
 SMA-02LL-TGN(-RP) LOW-LOSS 58/U
 SMA-02F-TGN(-RP) RG-58/U
 SMA-02LV1-TGN(-RP) RG-174,316/U
 SMA-02M-TGG(-RP) RG-178/U
 SMA-02U-TGG(-RP) 1.30MM CABLE



SOLDER FOR SEMI-RIGID CABLE

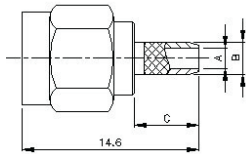


PART NUMBER:
 SMA-02V2-TGG(-RP) RG-402/U(.14")
 SMA-02V1-TGG(-RP) RG-405/U(.085")
 SMA-02V3-TGG(-RP) M17/151(.047")

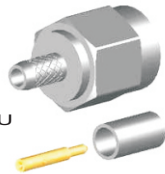


SMA STRAIGHT PLUG FOR CABLE TYPE

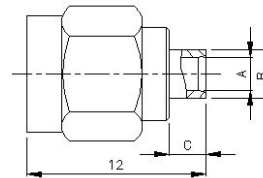
CRIMP FOR FLEXIBLE CABLE



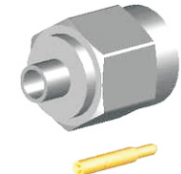
PART NUMBER:
 SMA-03S-TGN(-RP) LMR-400
 SMA-03B-TGN(-RP) RG-213/U
 SMA-03R-TGN(-RP) LMR-240
 SMA-52S1-TGN(-RP) LMR-200
 SMA-03LL-TGN(-RP) LOW-LOSS 58/U
 SMA-03F-TGN(-RP) RG-58/U
 SMA-03LV1-TGN(-RP) RG-174,316/U
 SMA-03M-TGG(-RP) RG-178/U
 SMA-03U-TGG(-RP) 1.30MM CABLE



SOLDER FOR SEMI-RIGID CABLE

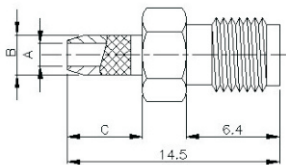


PART NUMBER:
 SMA-03V2-TGG(-RP) RG-402/U(.14")
 SMA-03V1-TGG(-RP) RG-405/U(.085")
 SMA-03V3-TGG(-RP) M17/151(.047")



SMA STRAIGHT JACK FOR CABLE TYPE

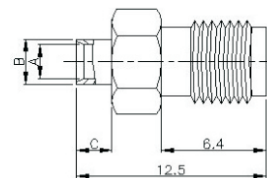
CRIMP FOR FLEXIBLE CABLE



PART NUMBER:
 SMA-04S-TGN(-RP) LMR-400
 SMA-04B-TGN(-RP) RG-213/U
 SMA-04R-TGN(-RP) LMR-240
 SMA-04LL-TGN(-RP) LOW-LOSS 58/U
 SMA-04F-TGN(-RP) RG-58/U
 SMA-04LV1-TGN(-RP) RG-174,316/U
 SMA-04M-TGG(-RP) RG-178/U
 SMA-04U-TGG(-RP) 1.30MM CABLE



SOLDER FOR SEMI-RIGID CABLE

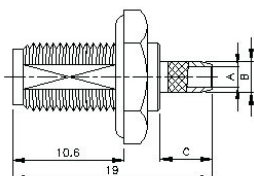


PART NUMBER:
 SMA-04V2-TGG(-RP) RG-402/U(.141")
 SMA-04V1-TGG(-RP) RG-405/U(.085")
 SMA-04V3-TGG(-RP) M17/151(.047")

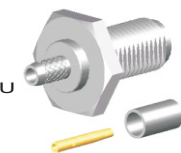


SMA STRAIGHT JACK BULKHEAD FOR CABLE TYPE

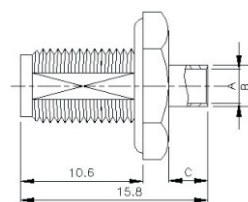
CRIMP FOR FLEXIBLE CABLE



PART NUMBER:
 SMA-05S-TGN(-RP) LMR-400
 SMA-05B-TGN(-RP) RG-213/U
 SMA-05R-TGN(-RP) LMR-240
 SMA-05LL-TGN(-RP) LOW-LOSS 58/U
 SMA-05F-TGN(-RP) RG-58/U
 SMA-05FA-TGN(-RP) RG-142,400/U
 SMA-05LV1-TGN(-RP) RG-174,316/U
 SMA-05M-TGG(-RP) RG-178/U
 SMA-05U-TGG(-RP) 1.30MM CABLE



SOLDER FOR SEMI-RIGID CABLE



PART NUMBER:
 SMA-05V2-TGG(-RP) RG-402/U(.141")
 SMA-05V1-TGG(-RP) RG-405/U(.085")
 SMA-05V3-TGG(-RP) M17/151(.047")

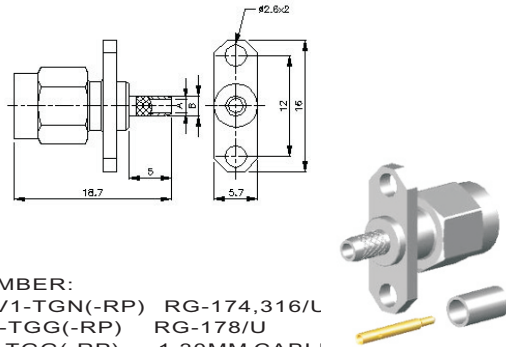




SMA

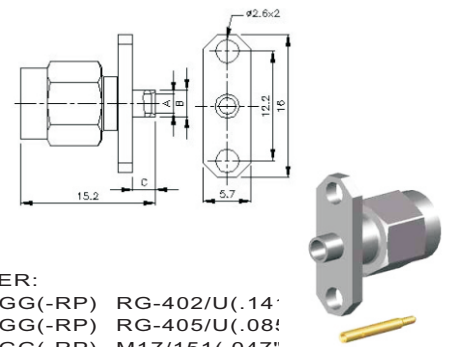
SMA FLANGE MOUNT PLUG FOR CABLE TYPE

CRIMP FOR FLEXIBLE CABLE



PART NUMBER:
 SMA-06LV1-TGN(-RP) RG-174,316/L
 SMA-06M-TGG(-RP) RG-178/U
 SMA-06U-TGG(-RP) 1.30MM CABLE

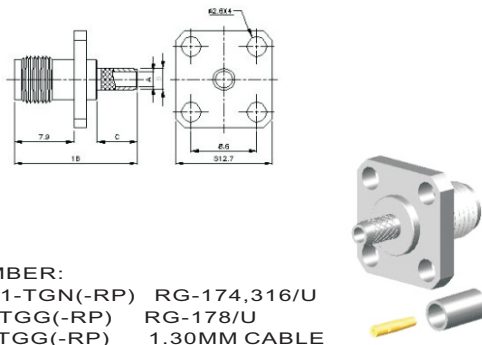
SOLDER FOR SEMI-RIGID CABLE



PART NUMBER:
 SMA-06V2-TGG(-RP) RG-402/U(.14)
 SMA-06V1-TGG(-RP) RG-405/U(.08)
 SMA-06V3-TGG(-RP) M17/151(.047")

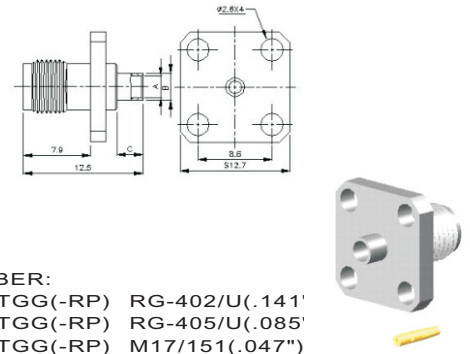
SMA FLANGE MOUNT JACK FOR CABLE TYPE

CRIMP FOR FLEXIBLE CABLE



PART NUMBER:
 SMA-07LV1-TGN(-RP) RG-174,316/U
 SMA-07M-TGG(-RP) RG-178/U
 SMA-07U-TGG(-RP) 1.30MM CABLE

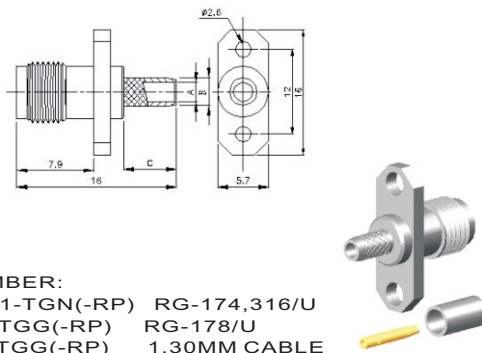
SOLDER FOR SEMI-RIGID CABLE



PART NUMBER:
 SMA-07V2-TGG(-RP) RG-402/U(.141")
 SMA-07V1-TGG(-RP) RG-405/U(.085")
 SMA-07V3-TGG(-RP) M17/151(.047")

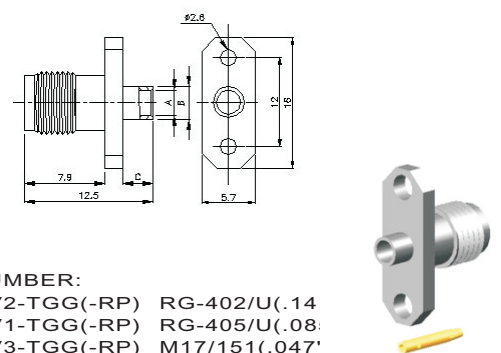
SMA FLANGE MOUNT JACK FOR CABLE TYPE

CRIMP FOR FLEXIBLE CABLE



PART NUMBER:
 SMA-08LV1-TGN(-RP) RG-174,316/U
 SMA-08M-TGG(-RP) RG-178/U
 SMA-08U-TGG(-RP) 1.30MM CABLE

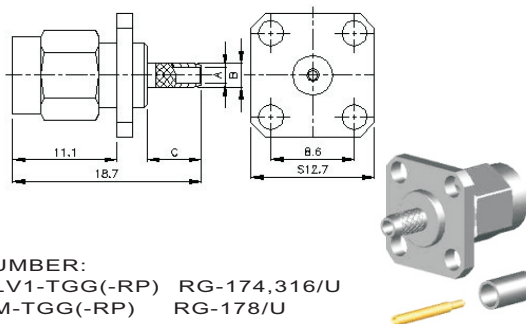
SOLDER FOR SEMI-RIGID CABLE



PART NUMBER:
 SMA-08V2-TGG(-RP) RG-402/U(.14)
 SMA-08V1-TGG(-RP) RG-405/U(.08)
 SMA-08V3-TGG(-RP) M17/151(.047")

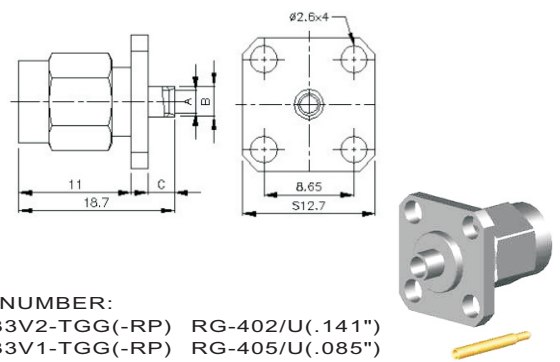
SMA FLANGE PLUG FOR CABLE TYPE

CRIMP FOR FLEXIBLE CABLE



PART NUMBER:
 SMA-33LV1-TGG(-RP) RG-174,316/U
 SMA-33M-TGG(-RP) RG-178/U
 SMA-33U-TGG(-RP) 1.30MM CABLE

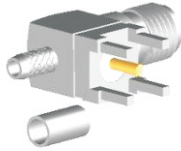
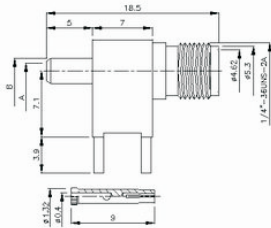
SOLDER FOR SEMI-RIGID CABLE



PART NUMBER:
 SMA-33V2-TGG(-RP) RG-402/U(.141")
 SMA-33V1-TGG(-RP) RG-405/U(.085")
 SMA-33V3-TGG(-RP) M17/151(.047")

SMA RIGHT ANGLE JACK FOR CABLE TYPE

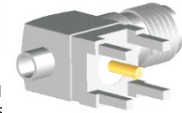
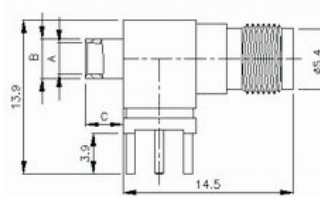
CRIMP FOR FLEXIBLE CABLE



PART NUMBER

SMA-11R-TGN(-RP)	LMR-240
SMA-11LL-TGN(-RP)	LOW-LOSS 58
SMA-11F-TGN(-RP)	RG-58/U
SMA-11LV1-TGN(-RP)	RG-174,316/U
SMA-11M-TGG(-RP)	RG-178/U
SMA-11U-TGG(-RP)	1.30MM CABLE

SOLDER FOR SEMI-RIGID CABLE

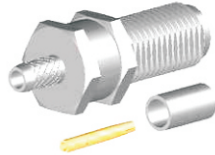
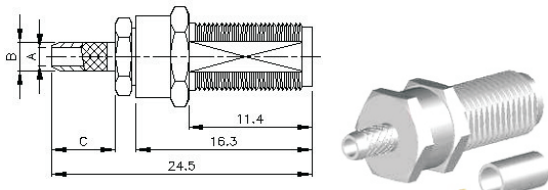


PART NUMBER:

SMA-11V2-TGG(-RP)	RG-402/U(.141)
SMA-11V1-TGG(-RP)	RG-405/U(.085)
SMA-11V3-TGG(-RP)	M17/151(.047")

SMA STRAIGHT JACK BULKHEAD FOR CABLE TYPE

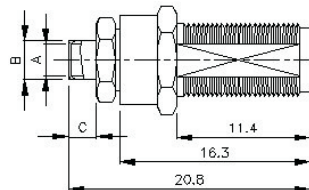
CRIMP FOR FLEXIBLE CABLE



PART NUMBER:

SMA-44S-TGN(-RP)	LMR-400
SMA-44B-TGN(-RP)	RG-213/U
SMA-44R-TGN(-RP)	LMR-240
SMA-44LL-TGN(-RP)	LOW-LOSS 58/U
SMA-44F-TGN(-RP)	RG-58/U
SMA-44LV1-TGN(-RP)	RG-174,316/U
SMA-44M-TGG(-RP)	RG-178/U
SMA-44U-TGG(-RP)	1.30MM CABLE

SOLDER FOR SEMI-RIGID CABLE

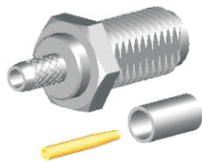
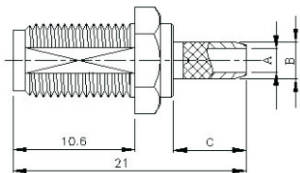


PART NUMBER:

SMA-44V2-TGG(-RP)	RG-402/U(.141)
SMA-44V1-TGG(-RP)	RG-405/U(.085)
SMA-44V3-TGG(-RP)	M17/151(.047")

SMA STRAIGHT JACK FOR CABLE TYPE

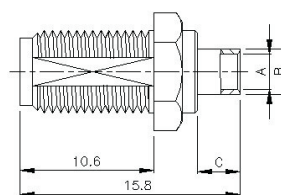
CRIMP FOR FLEXIBLE CABLE



PART NUMBER:

SMA-04S-TGN(-RP)	LMR-400
SMA-04B-TGN(-RP)	RG-213/U
SMA-04R-TGN(-RP)	LMR-240
SMA-04LL-TGN(-RP)	LOW-LOSS 5
SMA-04F-TGN(-RP)	RG-58/U
SMA-04LV1-TGN(-RP)	RG-174,316/U
SMA-04M-TGG(-RP)	RG-178/U
SMA-04U-TGG(-RP)	1.30MM CABL

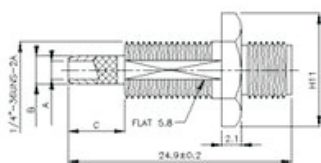
SOLDER FOR SEMI-RIGID CABLE



PART NUMBER:

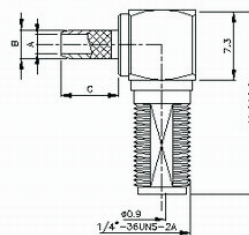
SMA-04V2-TGG(-RP)	RG-402/U(.141)
SMA-04V1-TGG(-RP)	RG-405/U(.085)
SMA-04V3-TGG(-RP)	M17/151(.047")

SMA JACK CRIMP BULKHEAD FOR CABLE TYPE



PART NUMBER:

SMA-91F-TGN(-RP)	RG-58/U
SMA-91LV1-TGN(-RP)	RG-174,316/U
SMA-91M-TGG(-RP)	RG-178/U



PART NUMBER:

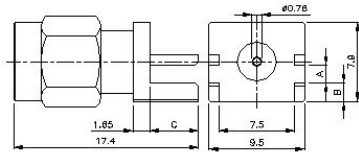
SMA-93F-TGN(-RP)	RG-58/U
SMA-93LV1-TGN(-RP)	RG-174,316/U
SMA-93M-TGG(-RP)	RG-178/U
SMA-93V2-TGG(-RP)	RG-402/U(.141")
SMA-93V1-TGG(-RP)	RG-405/U(.085")
SMA-93V3-TGG(-RP)	M17/151(.047")



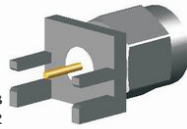
SMA

SMA PLUG END LAUNCH RECEPTACLE

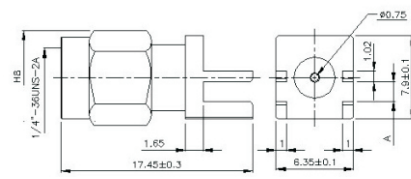
ROUND CONTACT



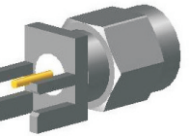
PART NUMBER:	BOARD THICKNESS	A
SMA-50V4-TGN(-RP)	1.57	1.73
SMA-50V5-TGN(-RP)	1.07	1.22
SMA-50V6-TGN(-RP)	0.79	0.94



ROUND CONTACT

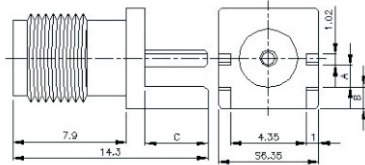


PART NUMBER:	BOARD THICKNESS	A
SMA-50V7-TGN(-RP)	1.57	1.73
SMA-50V8-TGN(-RP)	1.07	1.22
SMA-50V9-TGN(-RP)	0.79	0.94

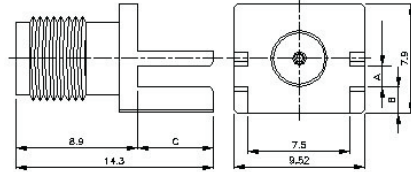


SMA JACK END LAUNCH RECEPTACLE

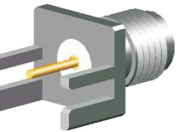
ROUND CONTACT



PART NUMBER:	BOARD THICKNESS	A
SMA-10V4-TGN(-RP)	1.57	1.73
SMA-10V5-TGN(-RP)	1.07	1.22

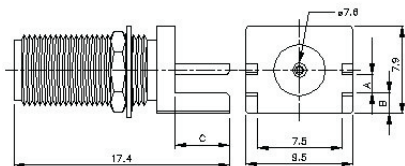


PART NUMBER:	BOARD THICKNESS	A
SMA-10V6-TGN(-RP)	1.57	1.73
SMA-10V7-TGN(-RP)	1.07	1.22
SMA-10V8-TGN(-RP)	0.79	0.94

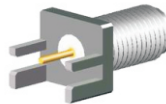


SMA STRAIGHT JACK END LAUNCH BULKHEAD RECEPTACLE

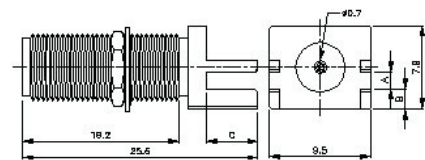
ROUND CONTACT



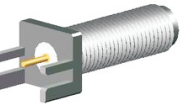
PART NUMBER:	BOARD THICKNESS	A
SMA-10V11-TGN(-RP)	1.57	1.73
SMA-10V12-TGN(-RP)	1.07	1.22
SMA-10V12-TGN-1	2.06	1.95
SMA-10V13-TGN(-RP)	0.79	0.94



ROUND CONTACT

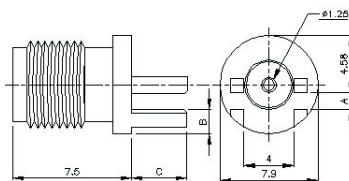


PART NUMBER:	BOARD THICKNESS	A
SMA-10V14-TGN(-RP)	1.57	1.73
SMA-10V15-TGN(-RP)	1.07	1.22
SMA-10V16-TGN(-RP)	0.79	0.94



SMA STRAIGHT JACK END LAUNCH RECEPTACLE

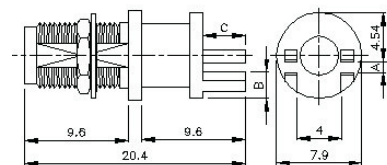
ROUND CONTACT



PART NUMBER:	BOARD THICKNESS	A
SMA-10V29-TGN(-RP)	1.57	1.73
SMA-10V17-TGN(-RP)	1.47	1.62
SMA-10V18-TGN(-RP)	1.07	1.22
SMA-10V19-TGN(-RP)	0.79	0.94

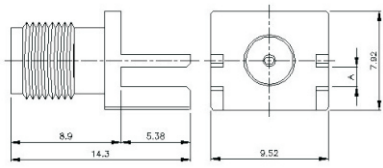


ROUND CONTACT

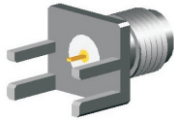
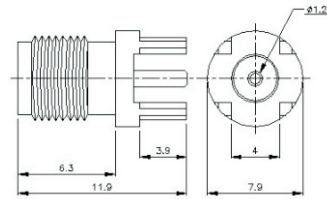


PART NUMBER:	BOARD THICKNESS	A
SMA-45V7-TGN(-RP)	1.57	1.73
SMA-45V4-TGN(-RP)	1.47	1.62
SMA-45V5-TGN(-RP)	1.07	1.22
SMA-45V6-TGN(-RP)	0.79	0.94

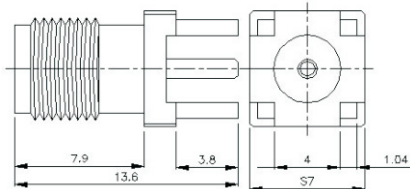


SMA JACK END LAUNCH RECEPTACLE
TAB CONTACT


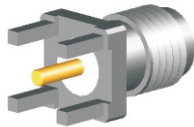
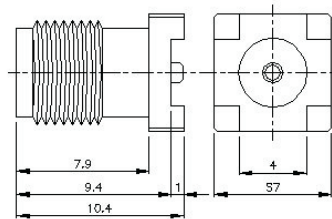
PART NUMBER:	BOARD THICKNESS	A
SMA-10V25-TGN(-RP)	2	2.16
SMA-10V26-TGN(-RP)	1.57	1.73
SMA-10V24-TGN(-RP)	1.07	1.22
SMA-10V27-TGN(-RP)	0.79	0.94


SMA STRAIGHT JACK PCB MOUNT
ROUND CONTACT


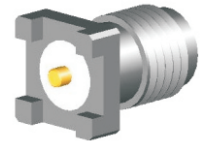
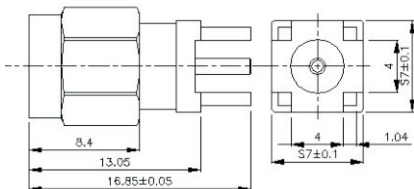
PART NUMBER:
SMA-10V22-TGN(-RP)


SMA JACK PCB MOUNT RECEPTACLE


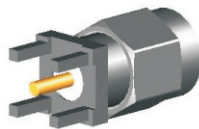
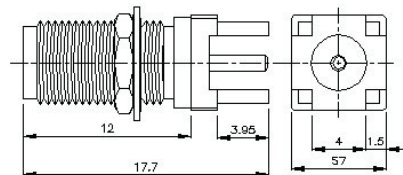
PART NUMBER:
SMA-10-TGN(-RP)


SURFACE MOUNT


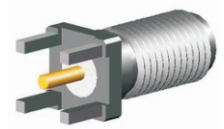
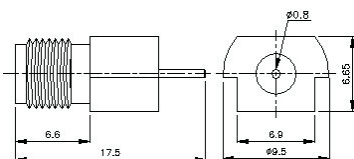
PART NUMBER:
SMA-10V21-TGN(-RP)


SMA PLUG PCB MOUNT


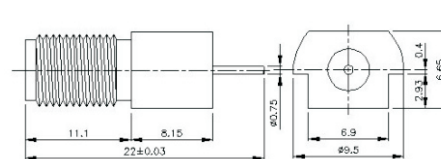
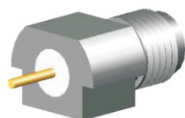
PART NUMBER:
SMA-50-TGG(-RP)


SMA JACK BULKHEAD PCB MOUNT


PART NUMBER:
SMA-10V23-TGN(-RP)


SMA STRAIGHT JACK EDGE MOUNT RECEPTACLE


PART NUMBER:
SMA-48-TGN(-RP)



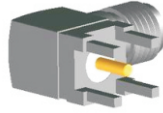
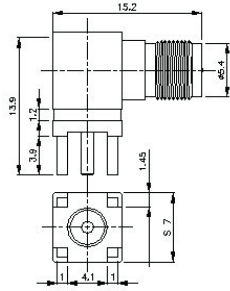
PART NUMBER:
SMA-48V5-TGN(-RP)





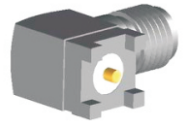
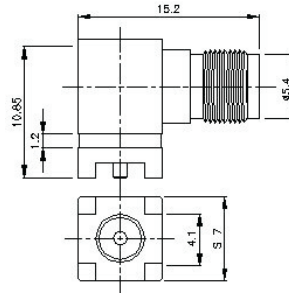
SMA

SMA RIGHT ANGLE JACK PCB MOUNT



PART NUMBER:
SMA-11-TGN(-RP)
SMA-11V4-TGN(-RP)

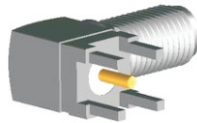
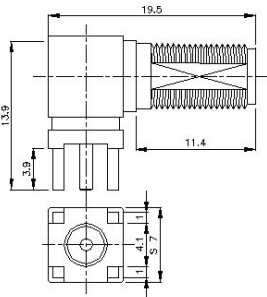
SURFACE MOUNT



PART NUMBER:
SMA-11V7-TGN(-RP)

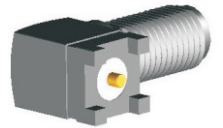
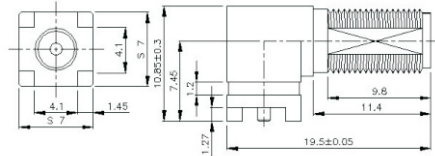
SMA RIGHT ANGLE JACK PCB MOUNT

BULKHEAD PCB MOUNT

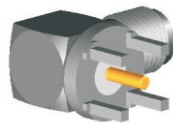
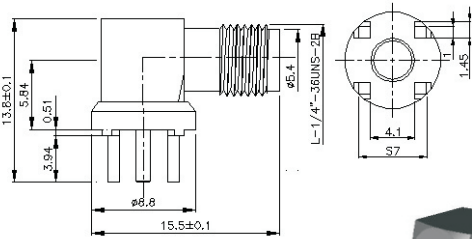


PART NUMBER:
SMA-11V5-TGN(-RP)
SMA-11V8-TGN(-RP)

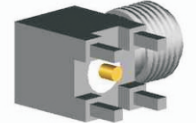
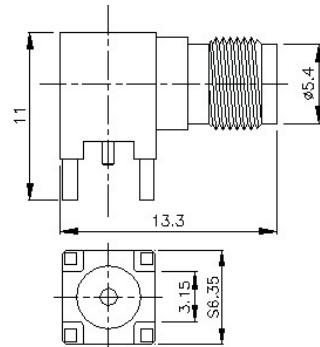
BULKHEAD SURFACE MOUNT



PART NUMBER:
SMA-11V16-TGN(-RP)

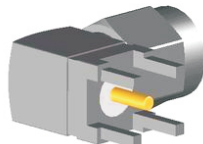
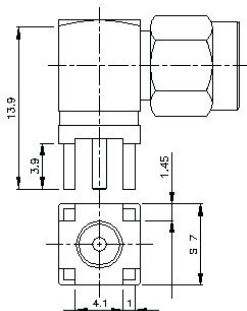


PART NUMBER:
SMA-11v19-TGN(-RP)



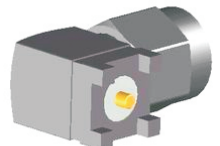
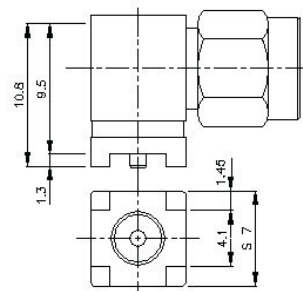
PART NUMBER:
SMA-11v10-TGN(-RP)

SMA RIGHT ANGLE PLUG PCB MOUNT



PART NUMBER:
SMA-49-TGN(-RP)

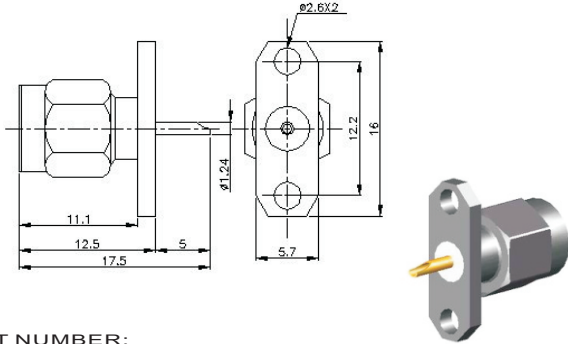
SURFACE MOUNT



PART NUMBER:
SMA-49V4-TGN(-RP)

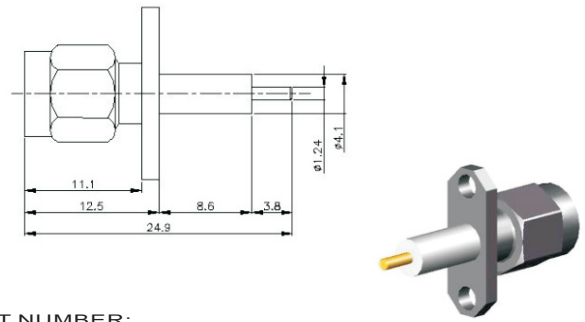
SMA STRAIGHT PLUG 2 HOLES FLANGE MOUNT RECEPTACLE

FLUSH TEFLON + SOLDER POT CONTACT



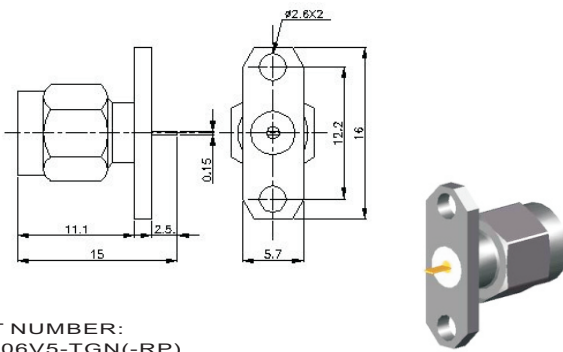
PART NUMBER:
SMA-06-TGN(-RP)

EXTENDED TEFLON + BLUNT POST CONTACT



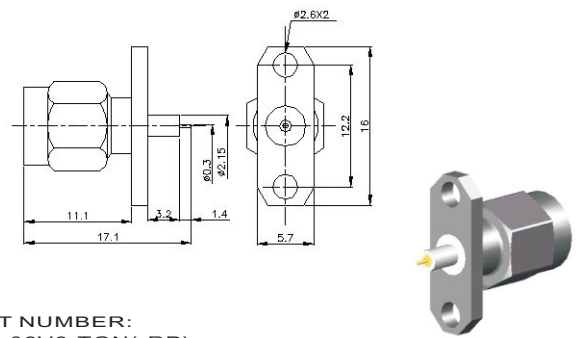
PART NUMBER:
SMA-06V4-TGN(-RP)

FLUSH TEFLON + TAB CONTACT



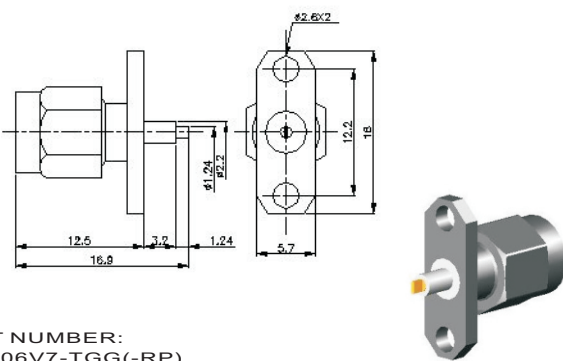
PART NUMBER:
SMA-06V5-TGN(-RP)

EXTENDED TEFLON + ROUND CONTACT



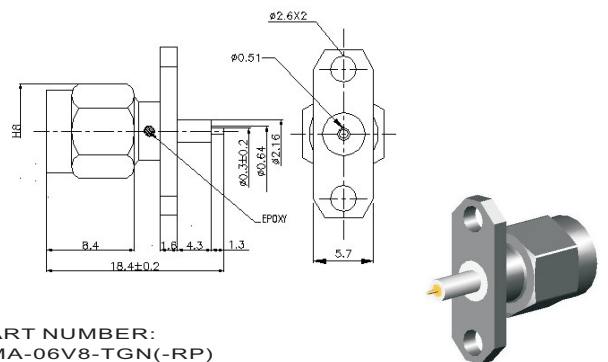
PART NUMBER:
SMA-06V6-TGN(-RP)

EXTENDED TEFLON + TAB CONTACT



PART NUMBER:
SMA-06V7-TGG(-RP)

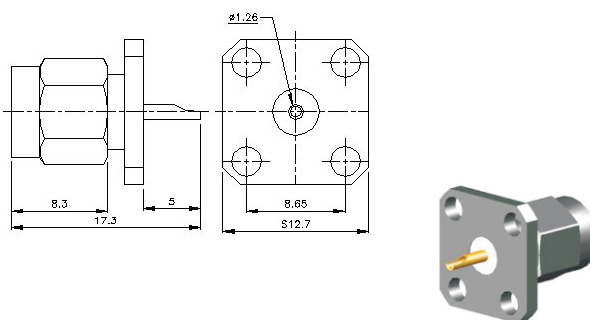
EXTENDED TEFLON + ROUND CONTACT



PART NUMBER:
SMA-06V8-TGN(-RP)

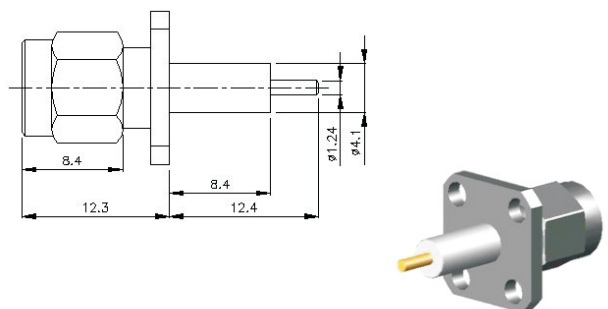
SMA STRAIGHT PLUG 4 HOLES FLANGE MOUNT RECEPTACLE

FLUSH TEFLON + SOLDER POT CONTACT



PART NUMBER:
SMA-33-TGN(-RP)

EXTEN TEFLON + SOLDER POT CONTACT



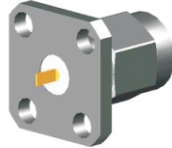
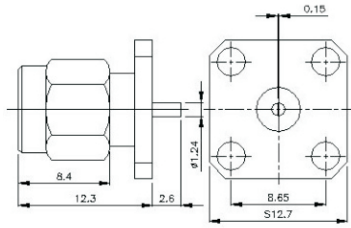
PART NUMBER:
SMA-33V4-TGN(-RP)



SMA

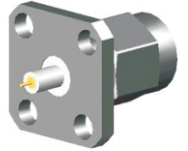
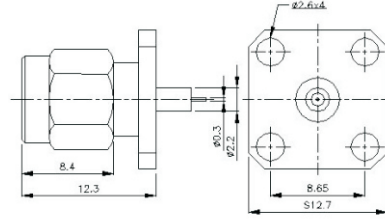
SMA STRAIGHT MALE 4 HOLES FLANGE MOUNT RECEPTACLE

FLUSH TEFLON + SOLDER POT CONTACT



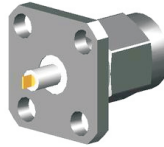
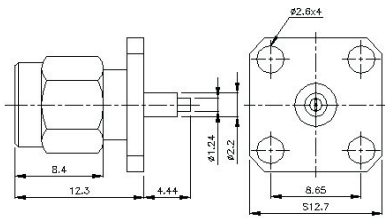
PART NUMBER:
SMA-33V5-TGN(-RP)

EXTENDED TEFLON+ ROUND CONTACT



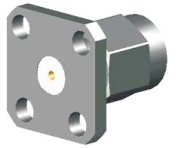
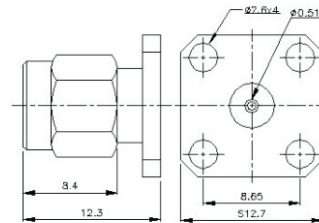
PART NUMBER:
SMA-33V6-TGN(-RP)

EXTENDED TEFLON + TAB CONTACT



PART NUMBER:
SMA-33V7-TGN(-RP)

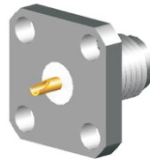
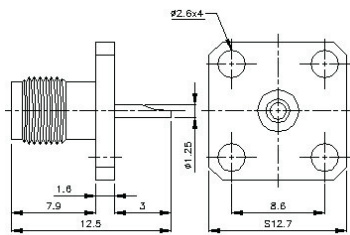
FLUSH TEFLON WITHOUT GASKET



PART NUMBER:
SMA-33V8-TGN(-RP)

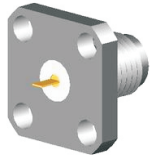
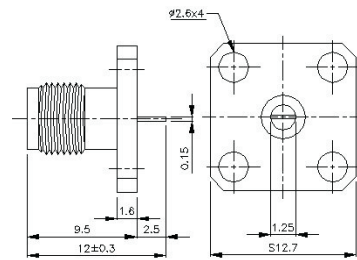
SMA STRAIGHT JACK 4 HOLES FLANGE MOUNT RECEPTACLE

FLUSH TEFLON + SOLDER POT CONTACT



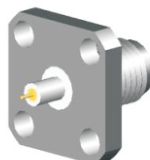
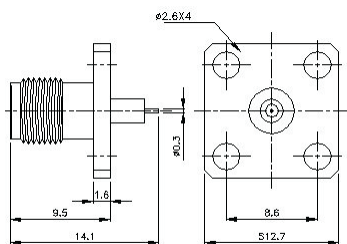
PART NUMBER:
SMA-07-TGG(-RP)

FLUSH TEFLON + TAB CONTACT



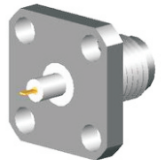
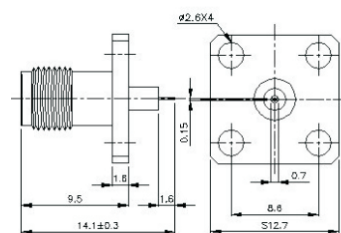
PART NUMBER:
SMA-07V4-TGN(-RP)

EXTENDED TEFLON + ROUND CONTACT



PART NUMBER:
SMA-07V5-TGN(-RP)

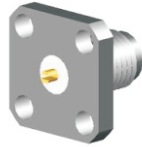
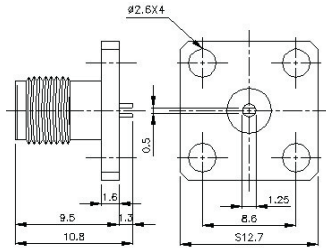
EXTENDED TEFLON + ROUND CONTACT



PART NUMBER:
SMA-07V6-TGN(-RP)

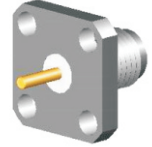
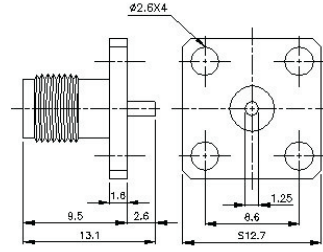
SMA STRAIGHT JACK 4 HOLES FLANGE MOUNT RECEPTACLE

FLUSH TEFLON + SLOTTED CONTACT



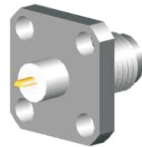
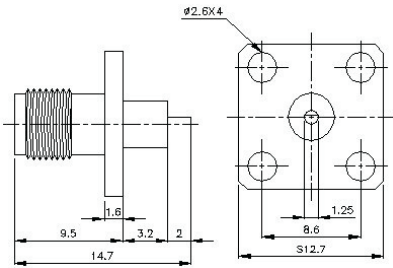
PART NUMBER:
SMA-07V7-TGN(-RP)

FLUSH TEFLON + BLUNT POST CONTACT



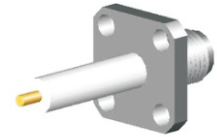
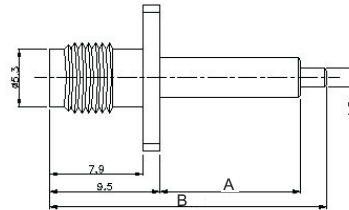
PART NUMBER:
SMA-07V8-TGN(-RP)

EXTENDED TEFLON + HALF POST CONTACT



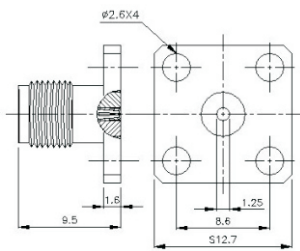
PART NUMBER:
SMA-07V9-TGN(-RP)

EXTENDED TEFLON + BLUNT POST CONTACT



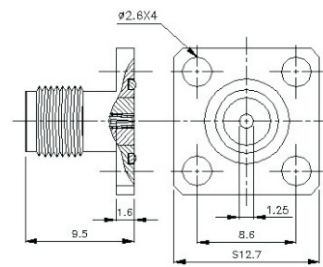
PART NUMBER: A B
 SMA-07V10-TGN(-RP) 15 27.4
 SMA-07V13-TGN(-RP) 9.5 22.4
 SMA-07V13-TGG-2 5 21.5
 SMA-07V16-TGN(-RP) 4.75 17
 SMA-82V10-TGG(-R P) 15 27.4 (EPOXY CAPTIVATED)
 SMA-82V13-TGG(-R P) 15 27.4 (EPOXY NON CAPTIVATED)

FLUSH TEFLON WITHOUT GASKET



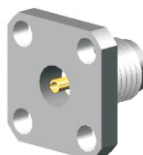
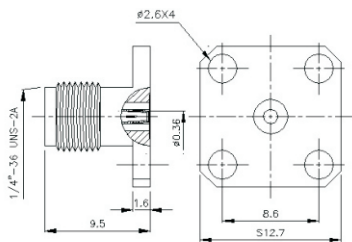
PART NUMBER: ACCEPT PIN(mm)
 SMA-07V11-TGN(-RP) 0.3
 SMA-07V11-TGN-1 0.38
 SMA-07V11-TGN-2 0.45
 SMA-07V11-TGN-3 0.5

FLUSH TEFLON WITH GASKET



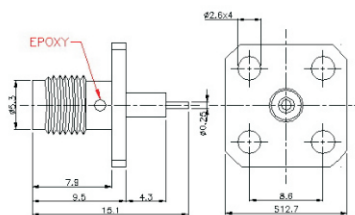
PART NUMBER: ACCEPT PIN(mm)
 SMA-07V12-TGN(-RP) 0.3
 SMA-07V12-TGN-1 0.38
 SMA-07V12-TGN-2 0.45
 SMA-07V12-TGN-3 0.5

LAUNCHERS WITH TRANSITION PINS



PART NUMBER: ACCEPT PIN(mm)
 SMA-07V14-TGN(-RP) 0.3
 SMA-07V14-TGN-1 0.38
 SMA-07V14-TGN-2 0.45
 SMA-07V14-TGN-3 0.5

EPOXY CAPTIVATED



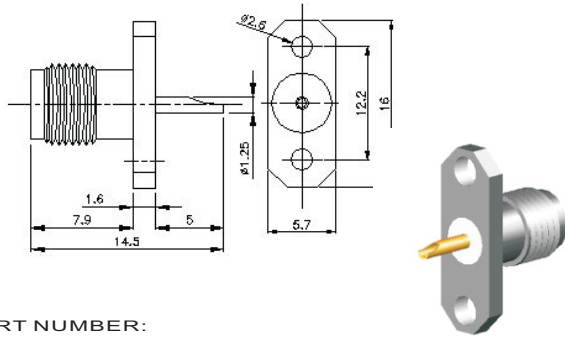
PART NUMBER:
SMA-82V6-TGN(-RP)



SMA

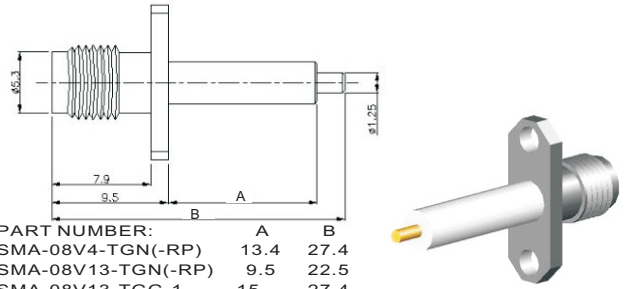
SMA STRAIGHT JACK 2 HOLES FLANGE MOUNT RECEPTACLE

FLUSH TEFLON + SOLDER POT CONTACT



PART NUMBER:
SMA-08-TGN(-RP)

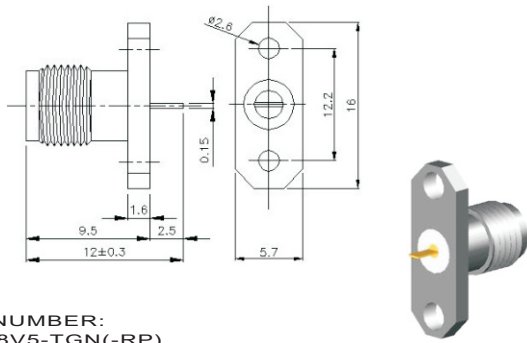
EXTENDED TEFLON+ BLUNT POST CONTACT



PART NUMBER:

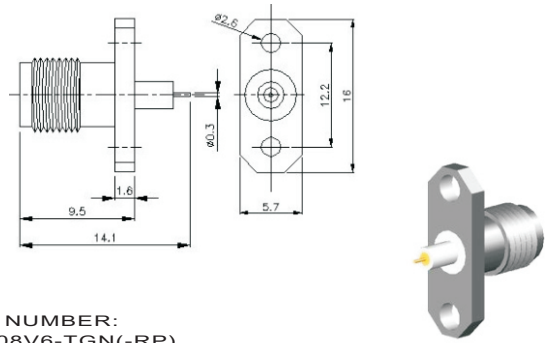
	A	B
SMA-08V4-TGN(-RP)	13.4	27.4
SMA-08V13-TGN(-RP)	9.5	22.5
SMA-08V13-TGG-1	15	27.4
SMA-08V15-TGN(-RP)	4.75	17
SMA-81V10-TGG(-R P)	15	27.4 (EPOXY CAPTIVATED)
SMA-81V13-TGG(-R P)	15	27.4 (EPOXY NON CAPTIVATED)

FLUSH TEFLON + TAB CONTACT



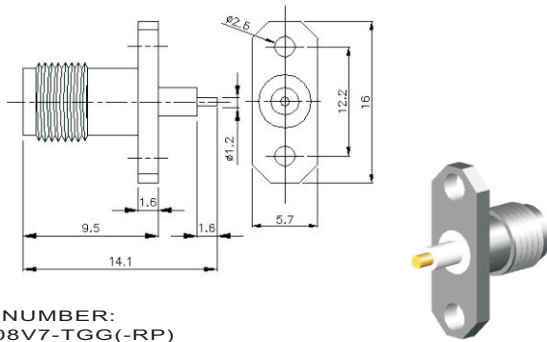
PART NUMBER:
SMA-08V5-TGN(-RP)

EXTENDED TEFLON + ROUND CONTACT



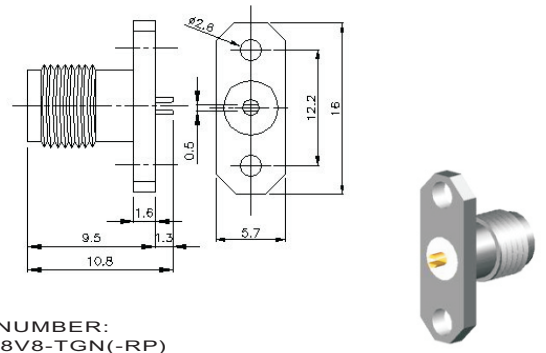
PART NUMBER:
SMA-08V6-TGN(-RP)

EXTENDED TEFLON + TAB CONTACT



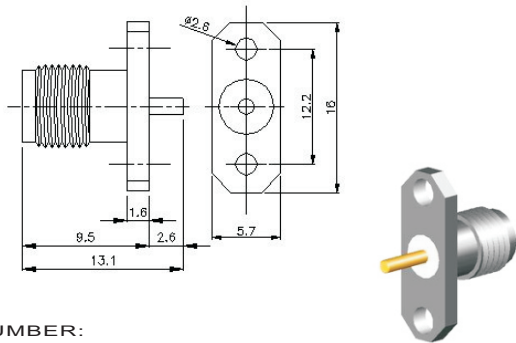
PART NUMBER:
SMA-08V7-TGG(-RP)

FLUSH TEFLON + SLOTTED CONTACT



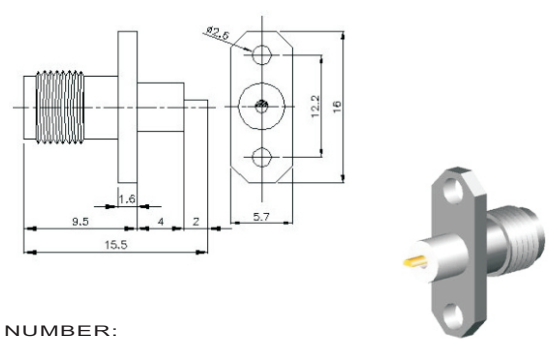
PART NUMBER:
SMA-08V8-TGN(-RP)

EXTENDED TEFLON + ROUND CONTACT



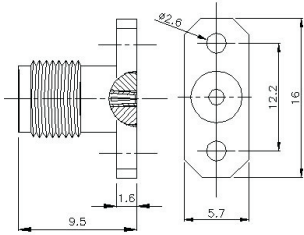
PART NUMBER:
SMA-08V9-TGN(-RP)

EXTENDED TEFLON + ROUND CONTACT

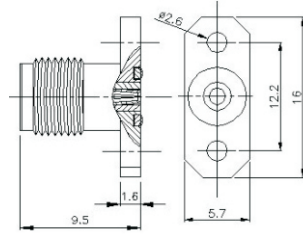


PART NUMBER:
SMA-08V10-TGN(-RP)

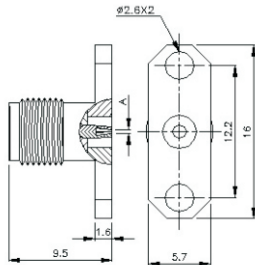
SMA STRAIGHT JACK 2 HOLES FLANGE MOUNT RECEPTACLE

FLUSH TEFLON WITHOUT GASKET


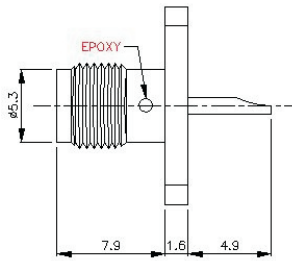
PART NUMBER:	ACCEPT PII
SMA-08V11-TGN(-RP)	0.3
SMA-08V11-TGN-1	0.38
SMA-08V11-TGN-2	0.45
SMA-08V11-TGN-3	0.5

FLUSH TEFLON WITH GASKET


PART NUMBER:	ACCEPT PIN(mm)
SMA-08V12-TGN(-RP)	0.3
SMA-08V12-TGN-1	0.38
SMA-08V12-TGN-2	0.45
SMA-08V12-TGN-3	0.5

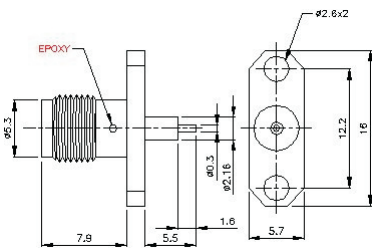
LAUNCHERS WITH TRANSITION PINS


PART NUMBER:	ACCEPT PIN(mm)
SMA-08V14-TGN(-RP)	0.3
SMA-08V14-TGN-1	0.38
SMA-08V14-TGN-2	0.45
SMA-08V14-TGN-3	0.5

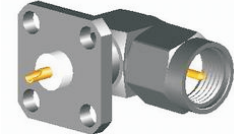
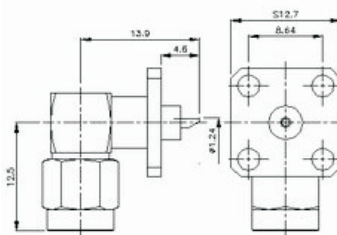
EPOXY CAPTIVATED STAINLESS STEEL


PART NUMBER:
SMA-81-TGN

SMA ANGLE PLUG FLANGE MOUNT

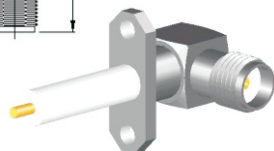
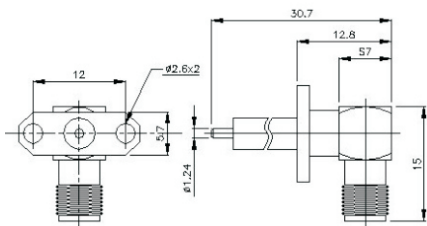
EPOXY CAPTIVATED STAINLESS STEEL


PART NUMBER:
SMA-81V6-TGN
SMA-81V14-TGN

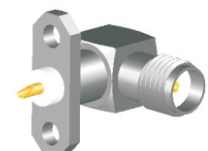
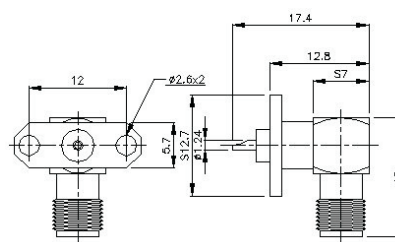


PART NUMBER:
SMA-55-TGN

SMA RIGHT ANGLE JACK PCB MOUNT

EXTENDED TEFLON+BLUNT POST CONTACT


PART NUMBER:
SMA-31-TGN(-RP)

EXTENDED TEFLON+SOLDER POT CONTACT


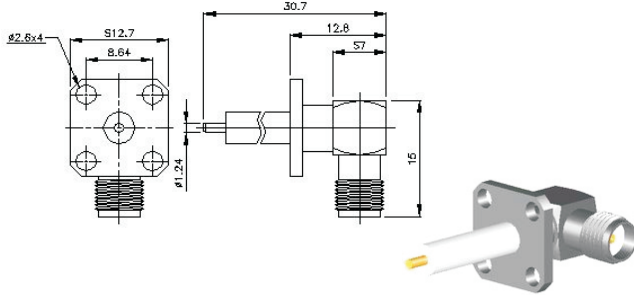
PART NUMBER:
SMA-31V4-TGN(-RP)



SMA

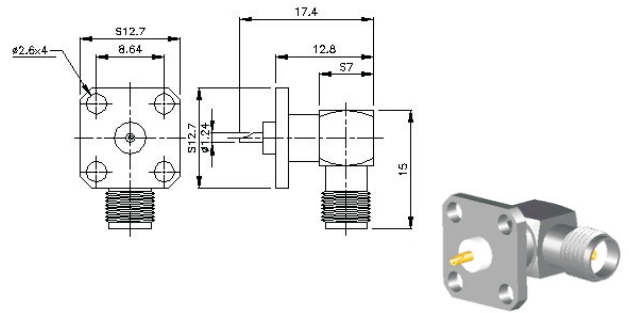
SMA RIGHT ANGLE JACK PCB MOUNT

EXTENDED TEFLON+BLUNT POST CONTACT



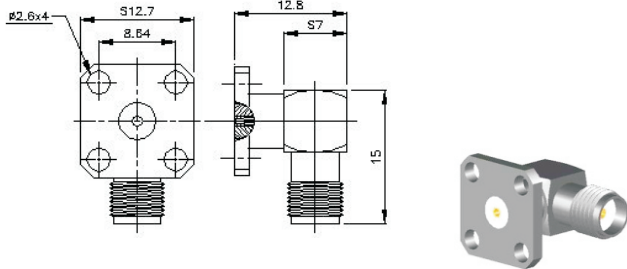
PART NUMBER:
SMA-41-TGN(-RP)

EXTENDED TEFLON+SOLDER POT CONTACT



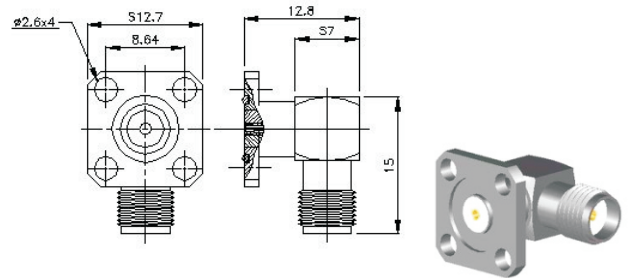
PART NUMBER:
SMA-41V4-TGN(-RP)

FLUSH TEFLON WITHOUT GASKET



PART NUMBER:
SMA-41V5-TGN(-RP)

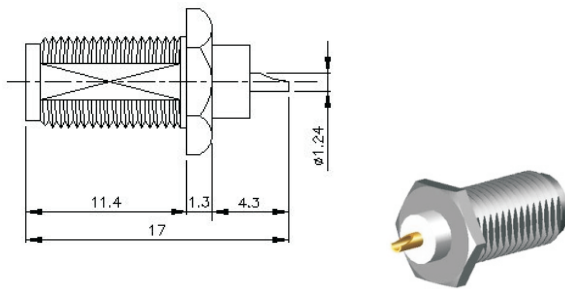
FLUSH TEFLON WITH GASKET



PART NUMBER:
SMA-41V6-TGN(-RP)

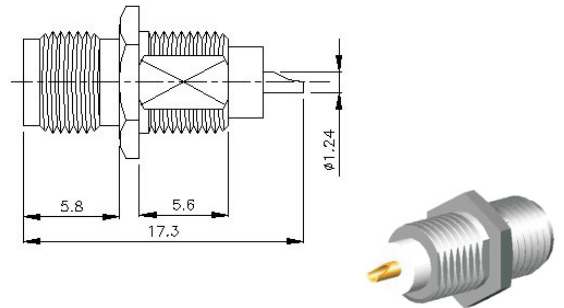
SMA STRAIGHT JACK BULKHEAD RECEPTACLE

REAR MOUNT



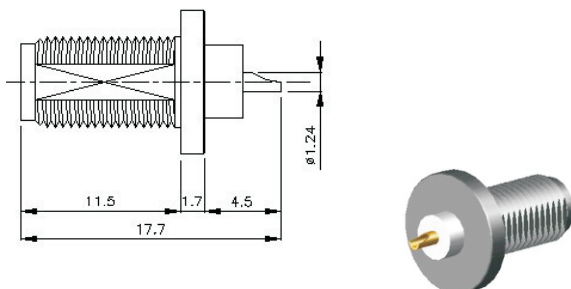
PART NUMBER:
SMA-09-TGN(-RP)

FRONT MOUNT



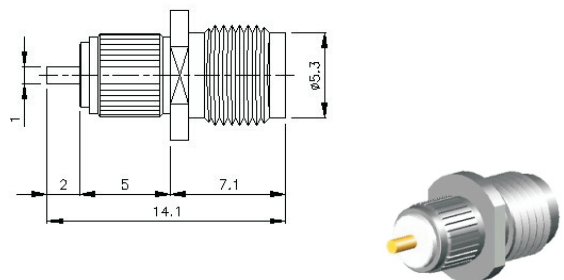
PART NUMBER:
SMA-09V4-TGN(-RP)

REAR MOUNT



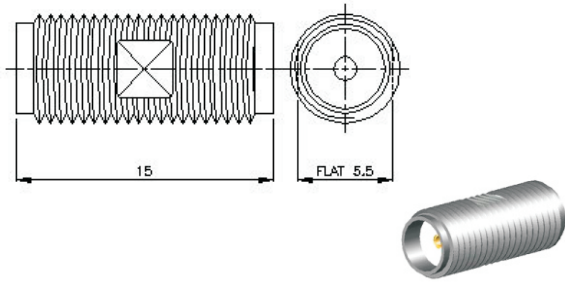
PART NUMBER:
SMA-09V5-TGN(-RP)

PRESS IN



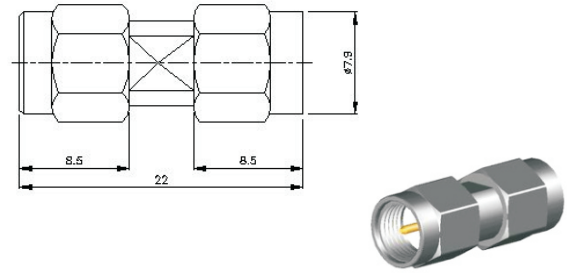
PART NUMBER:
SMA-09V6-TGN(-RP)

SMA JACK-JACK ADAPTOR



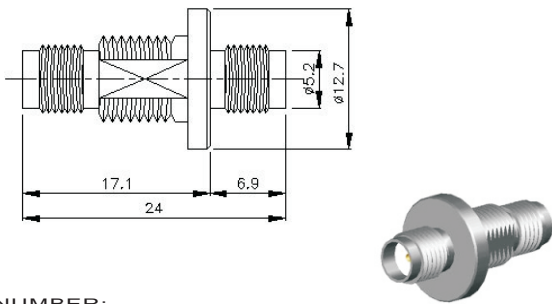
PART NUMBER:
SMA-15-TGN
SMA-15-TGN-RP(RP JACK- JACK)

SMA PLUG-PLUG ADAPTOR



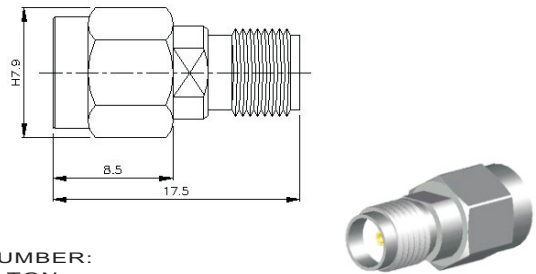
PART NUMBER:
SMA-14-TGN
SMA-14-TGN-RP(RP PLUG -PLUG)

SMA JACK -BULKHEAD JACK ADAPTOR



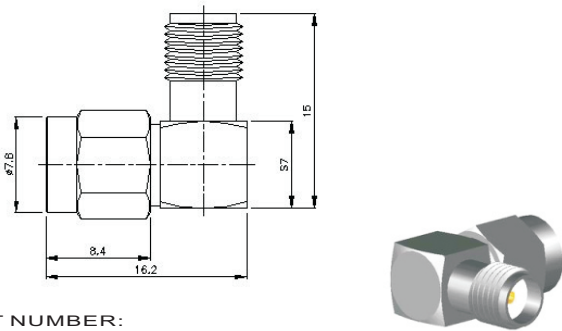
PART NUMBER:
SMA-13-TGN

SMA PLUG - JACK ADAPTOR



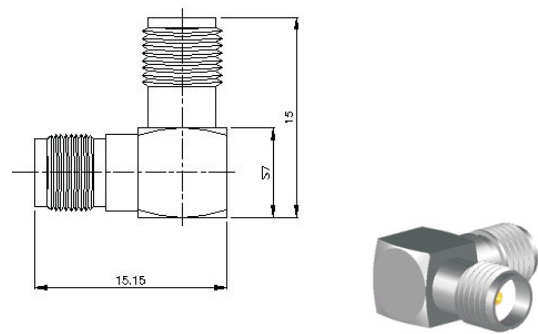
PART NUMBER:
SMA-16-TGN
SMA-16-TGN-RPV1(PLUG-RP JACK)\
SMA-16-TGN-RPV2(RP PLUG -JACK)

SMA ANGLE PLUG - JACK ADAPTOR



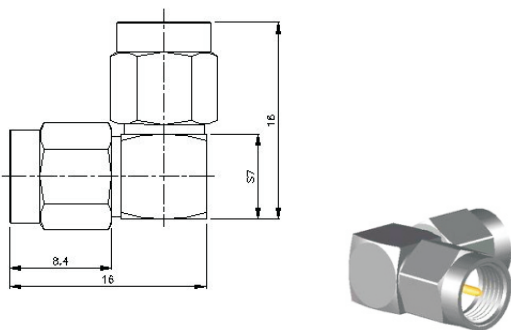
PART NUMBER:
SMA-12-TGN
SMA-12-TGN-RP(RP JACK-RP PLUG)

SMA ANGLE JACK -JACK ADAPTOR



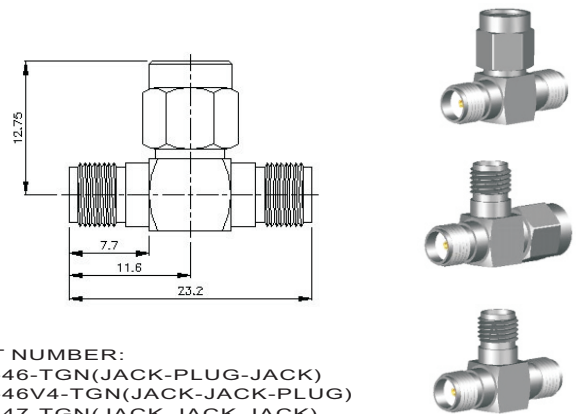
PART NUMBER:
SMA-54-TGN

SMA ANGLE PLUG -PLUG ADAPTOR



PART NUMBER:
SMA-32-TGN

SMA JACK - PLUG - JACK ADAPTOR

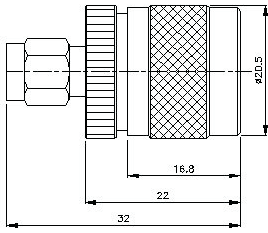


PART NUMBER:
SMA-46-TGN(JACK-PLUG-JACK)
SMA-46V4-TGN(JACK-JACK-PLUG)
SMA-47-TGN(JACK-JACK-JACK)



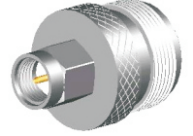
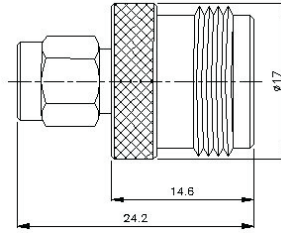
SMA

SMA PLUG-N PLUG ADAPTOR



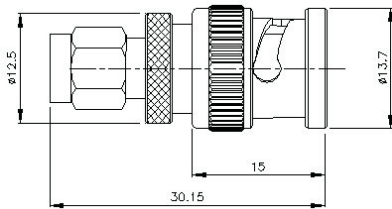
PART NUMBER:
SMA-17-TGN
SMA-17-TGN-RP(RP SMA - N PLUG)

SMA PLUG-N JACK ADAPTOR



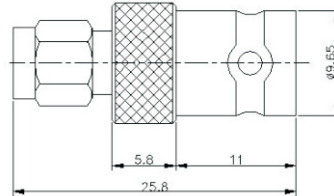
PART NUMBER:
SMA-18-TGN
SMA-18-TGN-RPV1(RP SMA - N JACK)

SMA PLUG-BNC PLUG ADAPTOR



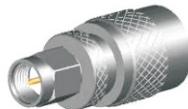
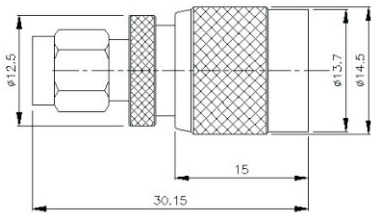
PART NUMBER:
SMA-19-TGN

SMA PLUG-BNC JACK ADAPTOR



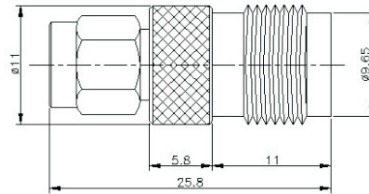
PART NUMBER:
SMA-20-TGN
SMA-20-TGN-RP(RP SMA - BNC JAC)

SMA PLUG-TNC PLUG ADAPTOR



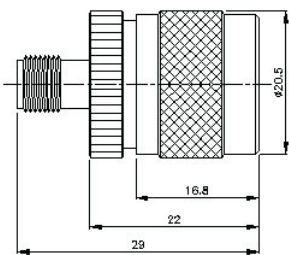
PART NUMBER:
SMA-21-TGN
SMA-21-TGN-RPV1(SMA - R.P TNC)

SMA PLUG-TNC JACK ADAPTOR



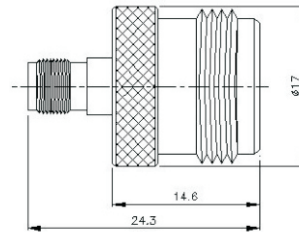
PART NUMBER:
SMA-22-TGN
SMA-22-TGN-RPV1(RP SMA - TNC)

SMA JACK-TNC PLUG ADAPTOR



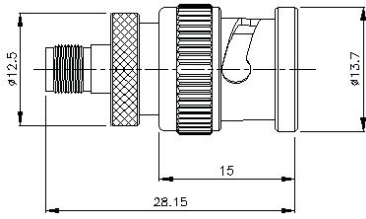
PART NUMBER:
SMA-23-TGN
SMA-23-TGN-RP(RP SMA - N)

SMA JACK-TNC JACK ADAPTOR



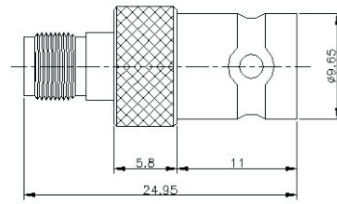
PART NUMBER:
SMA-24-TGN
SMA-24-TGN-RP(RP SMA - N)

SMA JACK-BNC PLUG ADAPTOR



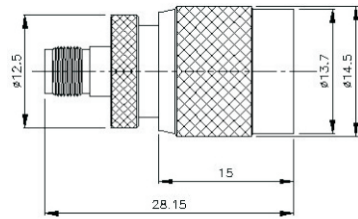
PART NUMBER:
SMA-25-TGN
SMA-25-TGN-RP(RP SMA- BNC)

SMA JACK-BNC JACK ADAPTOR



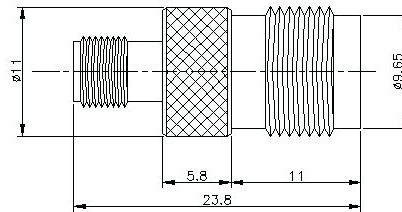
PART NUMBER:
SMA-26-TGN
SMA-26-TGN-RPV1(SMA-RP BNC)

SMA JACK-TNC PLUG ADAPTOR



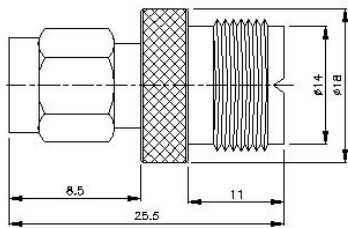
PART NUMBER:
SMA-27-TGN
SMA-27-TGN-RP(SMA-RP TNC)

SMA JACK-TNC JACK ADAPTOR



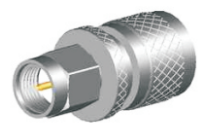
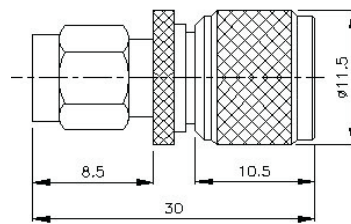
PART NUMBER:
SMA-28-TGN

SMA PLUG-UHF JACK ADAPTOR



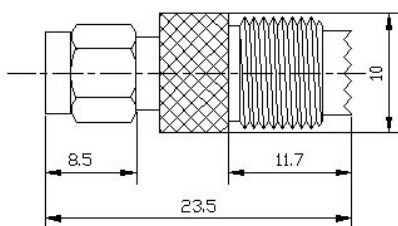
PART NUMBER:
SMA-29-TGN
SMA-29-TGN-RP(RP SMA-UHF)

SMA PLUG-MINI UHF PLUG ADAPTOR



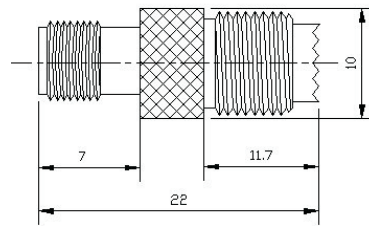
PART NUMBER:
SMA-34-TGN

SMA PLUG-MINI UHF JACK ADAPTOR



PART NUMBER:
SMA-35-TGN

SMA JACK-MINI UHF JACK ADAPTOR

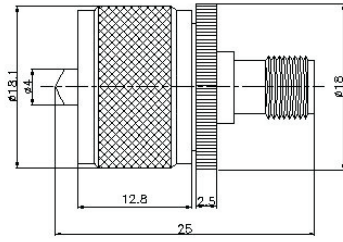


PART NUMBER:
SMA-36-TGN



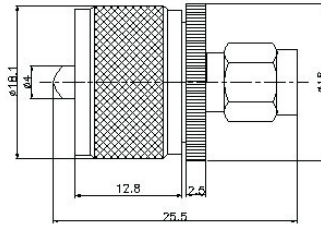
SMA

SMA JACK-UHF PLUG ADAPTOR



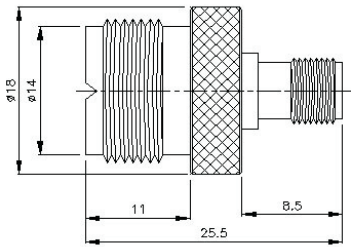
PART NUMBER:
SMA-37-TGN

SMA PLUG-UHF PLUG ADAPTOR



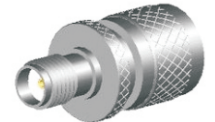
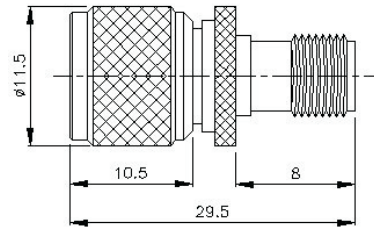
PART NUMBER:
SMA-38-TGN

SMA JACK-UHF JACK ADAPTOR



PART NUMBER:
SMA-39-TGN
SMA-39-TGN-RP(RP SMA - UHF JACK)

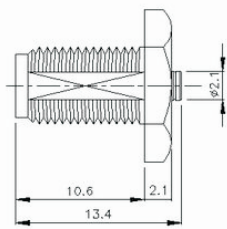
SMA JACK-MINI UHF PLUG ADAPTOR



PART NUMBER:
SMA-42-TGN

SMA JACK - SMT JACK ADAPTOR

REAR MOUNT

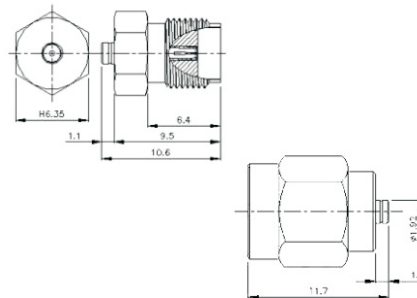


Hirose U.FL SMT



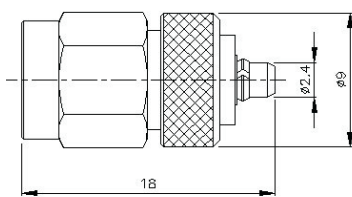
PART NUMBER:
SMA-51V4-TGN(WITH GASKET) **MuRata SMT GSC**
SMA-51V5-TGN(WITHOUT GASKET)
PART NUMBER:
SMA-51-TGN(GSC)...

SMA - U.FL SMT ADAPTOR



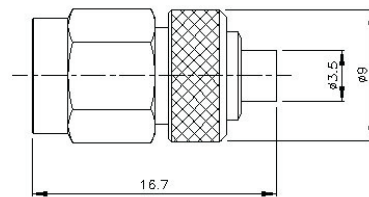
PART NUMBER:
SMA-86-TGN(JACK)
PART NUMBER:
SMA-87-TGN(PLUG)

SMA PLUG-MMCX PLUG ADAPTOR



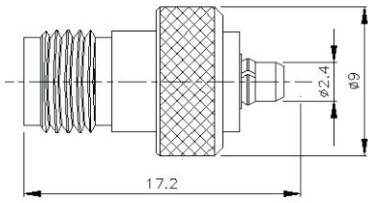
PART NUMBER:
SMA-59-TGN

SMA PLUG-MMCX JACK ADAPTOR



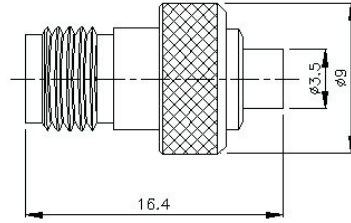
PART NUMBER:
SMA-67-TGN
SMA-67-TGN-RP(RP SMA - MMCX)

SMA JACK - MMCX PLUG ADAPTOR



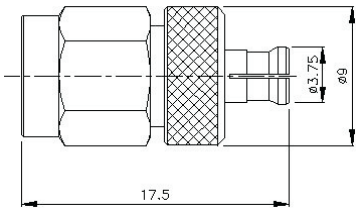
PART NUMBER:
SMA-63-TGN
SMA-63-TGN-RP(RP SMA- MMCX)

SMA JACK - MMCX JACK ADAPTOR



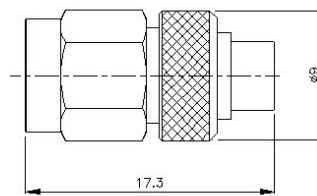
PART NUMBER:
SMA-71-TGN
SMA-71-TGN-RPV1(RP SMA-MMCX ,

SMA PLUG - MCX PLUG ADAPTOR



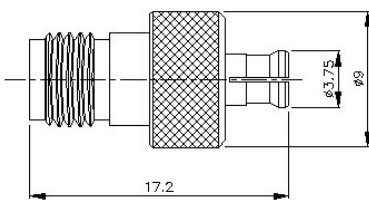
PART NUMBER:
SMA-60-TGN
SMA-60-TGN-RP(RP SMA-MCX)

SMA JACK - MCX JACK ADAPTOR



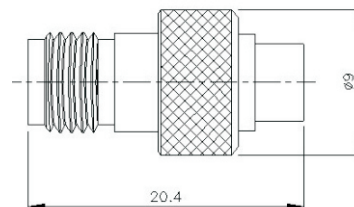
PART NUMBER:
SMA-68-TGN
SMA-68-TGN-RP(RP SMA - MCX)

SMA JACK - MCX PLUG ADAPTOR



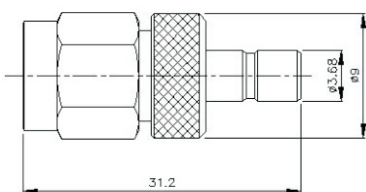
PART NUMBER:
SMA-64-TGN
SMA-64-TGN-RP(RP SMA-MCX)

SMA JACK - MCX JACK ADAPTOR



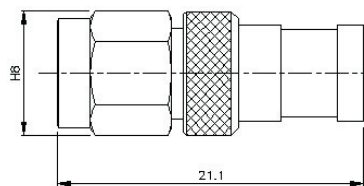
PART NUMBER:
SMA-72-TGN
SMA-72-TGN-RP(RP SMA- MCX)

SMA PLUG - SMB PLUG ADAPTOR



PART NUMBER:
SMA-61-TGN
SMA-61-TGN-RP(RP SMA - SMB)

SMA JACK - SMB JACK ADAPTOR

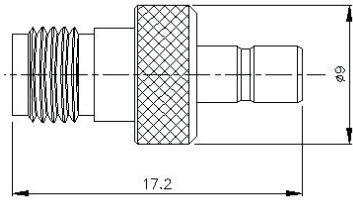


PART NUMBER:
SMA-69-TGN
SMA-69-TGN-RP(RP SMA- SMB)



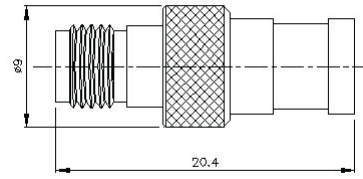
SMA

SMA JACK-SMB PLUG ADAPTOR



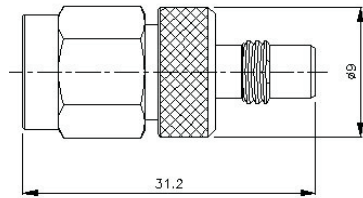
PART NUMBER:
SMA-65-TGN
SMA-65-TGN-RP(RP SMA- SMB)

SMA JACK-SMB JACK ADAPTOR



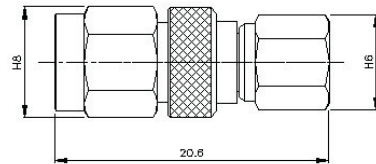
PART NUMBER:
SMA-73-TGN
SMA-73-TGN-RP(RP SMA - SMB)

SMA PLUG-SMC PLUG ADAPTOR



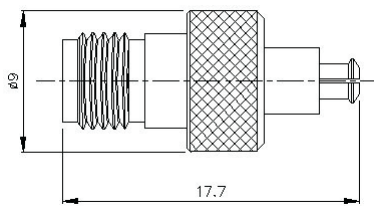
PART NUMBER:
SMA-62-TGN

SMA PLUG-SMC JACK ADAPTOR



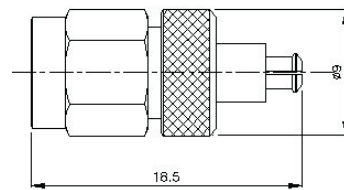
PART NUMBER:
SMA-70-TGN
SMA-70-TGG-RP(RP SMA - SMC)

SMA JACK - MC CARD PLUG ADAPTOR



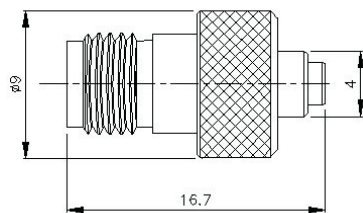
PART NUMBER:
SMA-76-TGN

SMA PLUG- MC CARD PLUG ADAPTOR



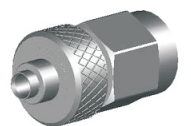
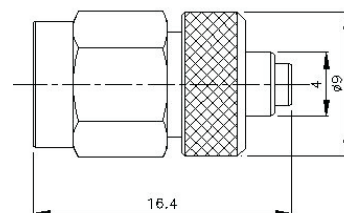
PART NUMBER:
SMA-77-TGN

SMA JACK-MC CARD JACK ADAPTOR



PART NUMBER:
SMA-78-TGN

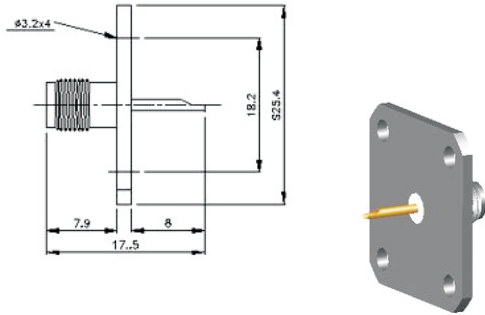
SMA PLUG-MC CARD JACK ADAPTOR



PART NUMBER:
SMA-69-TGN

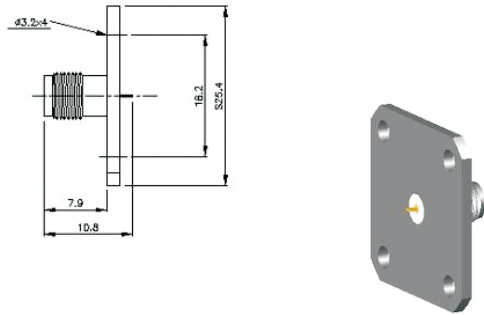
SMA JACK PANEL MOUNTED

FLUSH TEFLON+ SOLDER POST CONTACT



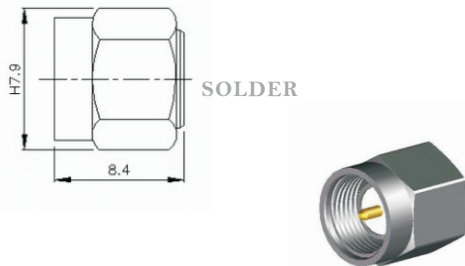
PART NUMBER:
SMA-84-TGN

FLUSH TEFLON+ TAB CONTACT



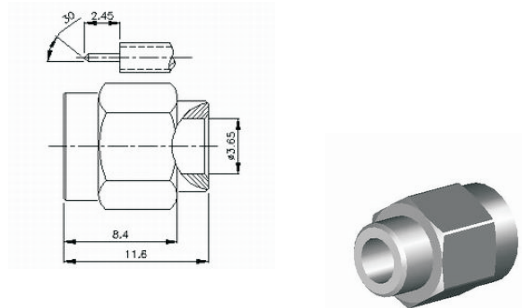
PART NUMBER:
SMA-84V4-TGN

SMA PLUG TERMINATOR 50 OHM



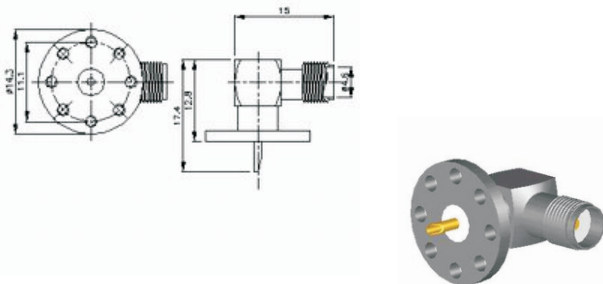
PART NUMBER:
SMA-53-TGG

SMA DIRECT SOLDER PLUG FOR RG-402



PART NUMBER:
SMA-88-GOLD

SMA RIGHT ANGLE JACK 4 SURFACE LAUNCH STRIPLINE



PART NUMBER:
SMA-57-TGG