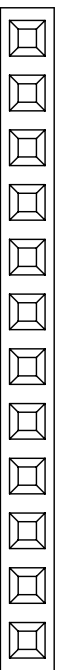
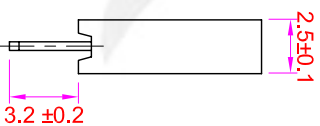
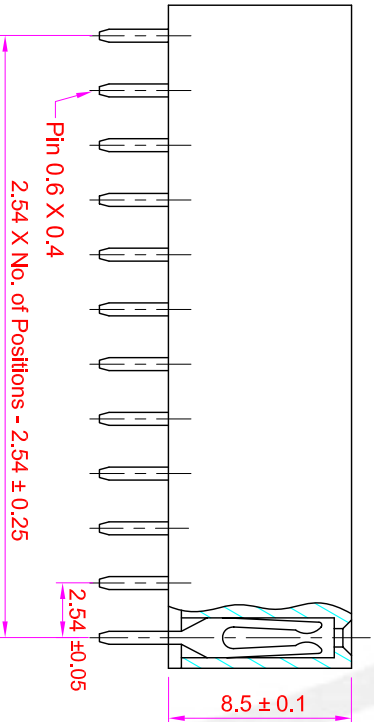


ROHS

0.4 + 2.54 X No. of Positions ± 0.35



Recommended
P.C. Board Hole Layout



| Rev | Modification | Date | Validate |
|-----|--------------|------|----------|
| | | | |

Specifications

- Current Rating : 3 Amps
- Insulator Resistance : 1000 Megohms min.
- Contact Resistance : 20 m ohms max.
- Dielectric Withstanding : AC 600V
- Operating Temperature : -40°C ~ +105°C
- Contact Material : Brass
- Insulator Material : Polyester, UL 94V-0 P.B.T.
- Contact Plated : See Option
- Standard: Full Gold Flash

Order Information

FHA3 - S 1 XX - 0 0 XX - X

- Serial Type _____
- Terminal Type _____
- S : Straight Type _____
- Row Type _____
- 1 : Single Row _____
- No. of Pin Per Row _____
- Contact Plated _____
- Insulator Material _____
- Blank : P.B.T. (Standard) _____
- N : Nylon-6T _____

| Contact Plating Option | Full Gold Plating | Gold Plating On Contact Area Tin Plating On Solder Area | Full Tin Plating |
|---|---|--|------------------|
| GA : Gold Flash GC : Gold 10u" GD : Gold 15u" GE : Gold 30u" | SA : Gold Flash SC : Gold 10u" SD : Gold 15u" SE : Gold 30u" | TA : Tin 100u" | |

| GENERAL TOLERANCE | | 單位 (UNIT) | 料號 (PART NO.) | 圖號 (DWG. NO.) | 比例 SCALE | 張數 SHEET | 名稱 (TITLE) |
|-------------------|------------|-----------|----------------|---------------|----------|----------|--|
| X. ± 0.50 | X. ° ± 5° | mm | FHA3-S1XX-00XX | FHA3-S1XX | 3:1 | 1/1 | Female Header P2.54 X 2.54mm |
| .X ± 0.20 | .X ° ± 2° | Alice | 審核 (CHECKED) | 製圖 (DRAWN) | 角法 PROJ. | 更改 REV. | Profile : 8.5mm, Single Row, Straight Type |
| .XX ± 0.10 | .XX ° ± 1° | Mary | Fen-Fen | | | | |
| DATE:20080306 | SCM1 | | | | | | |

IO PARTS 允允企業有限公司
IO PARTS Enterprise Co., Ltd.