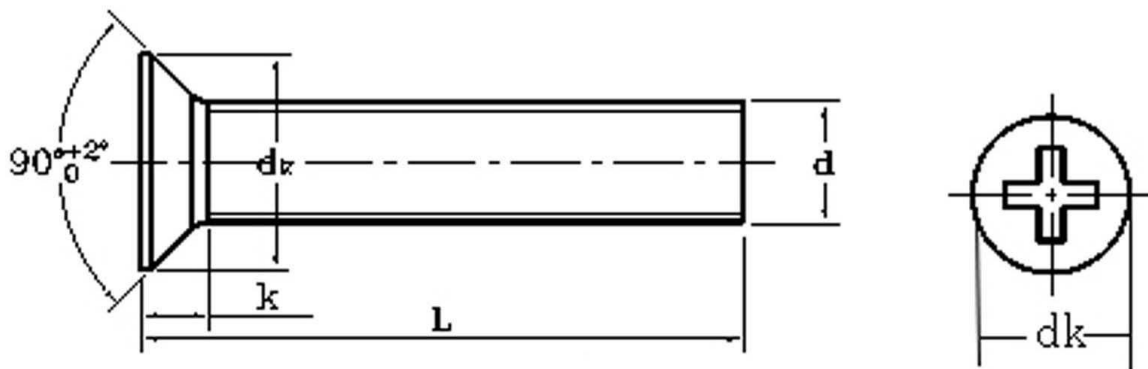


M2.5 COUNTERSUNK SCREW CROSS PHILLIPS



d tread diameter	P thread pitch	dk		k max
		min	max	
M1 (1mm)	0.2mm	1.7mm	2.0mm	0.6mm
M1.2 (1.2mm)	0.25mm	1.8mm	2.1mm	0.9mm
M1.4 (1.4mm)	0.3mm	2.8mm	3.2mm	1.0mm
M1.6 (1.6mm)	0.35mm	2.7mm	3.0mm	1.2mm
M2 (2mm)	0.4mm	3.5mm	3.8mm	1.3mm
M2.5 (2.5mm)	0.45mm	4.4mm	4.7mm	1.5mm
M3 (3mm)	0.5mm	5.2mm	5.5mm	1.7mm
M3.5 (3.5mm)	0.6mm	5.5mm	5.9mm	1.9mm
M4 (4mm)	0.7mm	6.8mm	7.6mm	2.7mm